

# Important Mounting Information



*These mounting information do not  
replace the operating and assembly  
instructions.*

*Please refer to these for further details.*

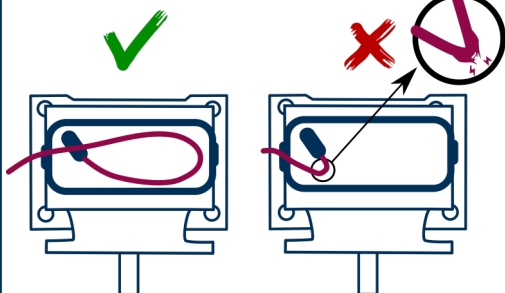
ID: 80218

Edition: 03 2024

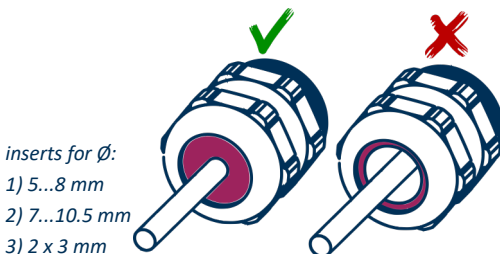


## Fiber Optic Cable

**Kink-free routing**

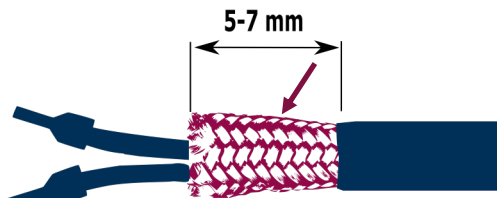


**Tight cable sealing**



## Power Supply Cable

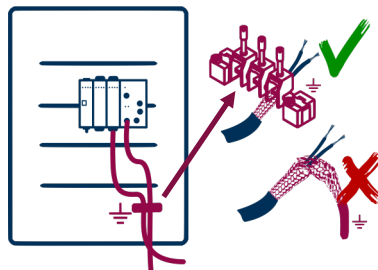
**Shielded power supply cable**



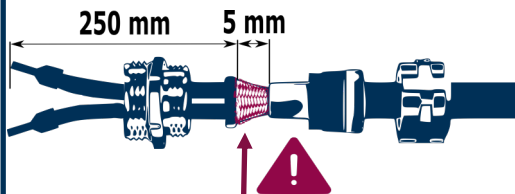
*We recommend:*

LAPP, ÖLFLEX CLASSIC 110 CY BLACK 2x0,75

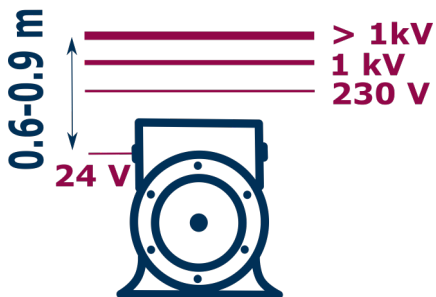
**Shield connection in control cabinet**



**Shield connection in cable gland**

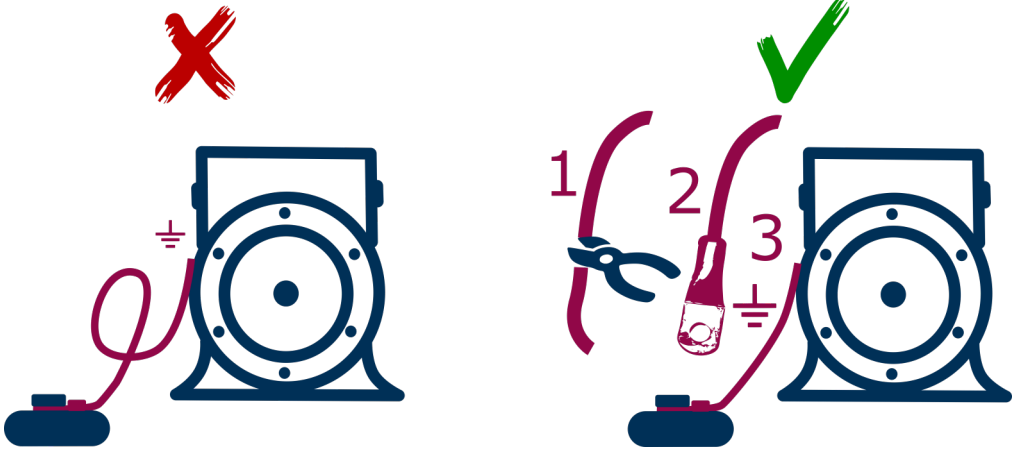


**Distance to high voltage cables**



# Grounding

Grounding strap as short as possible



Conductive grounding on main structure

