

	<h1>Anleitung</h1>	Datum 18.12.2018 EE Dirk Henkel Seite 1/8
-----------------------------------------------------------------------------------	--------------------	-----------------------------------------------------

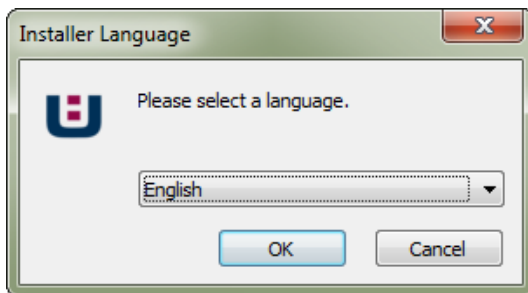
Operating manual AMS40Pro

1. Setup

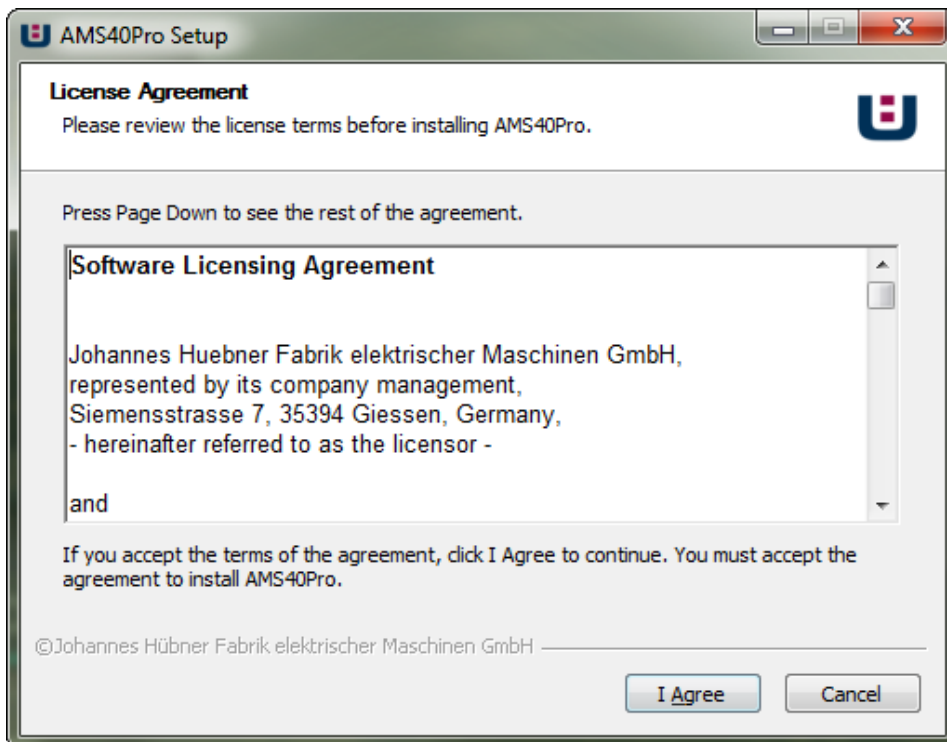
Insert the CD into the drive. The setup starts automatically. If not start the setup program manually.



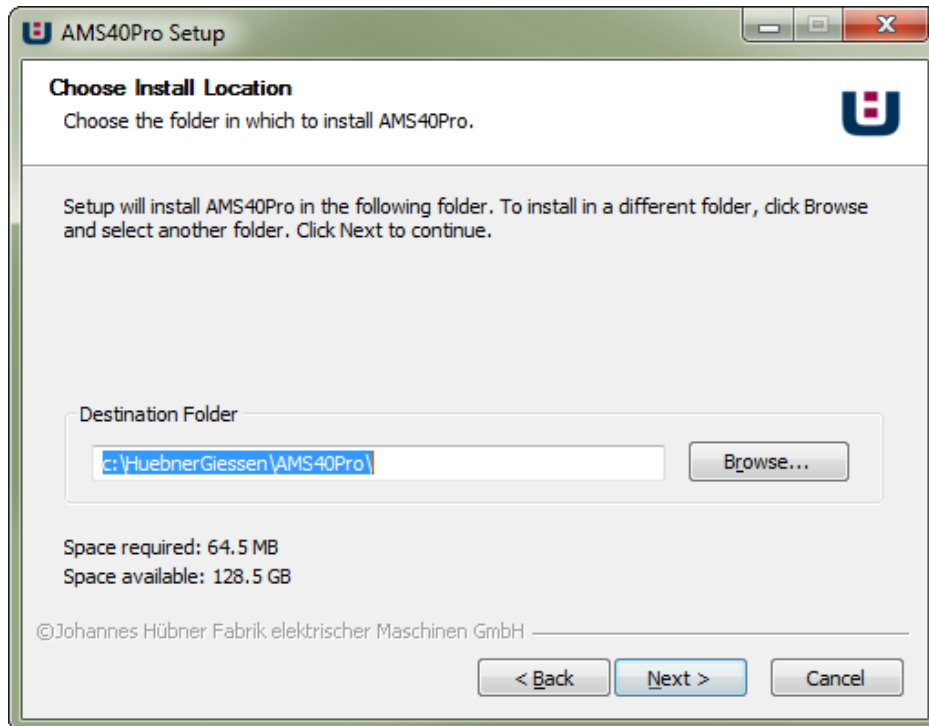
Then you'll see a message box.



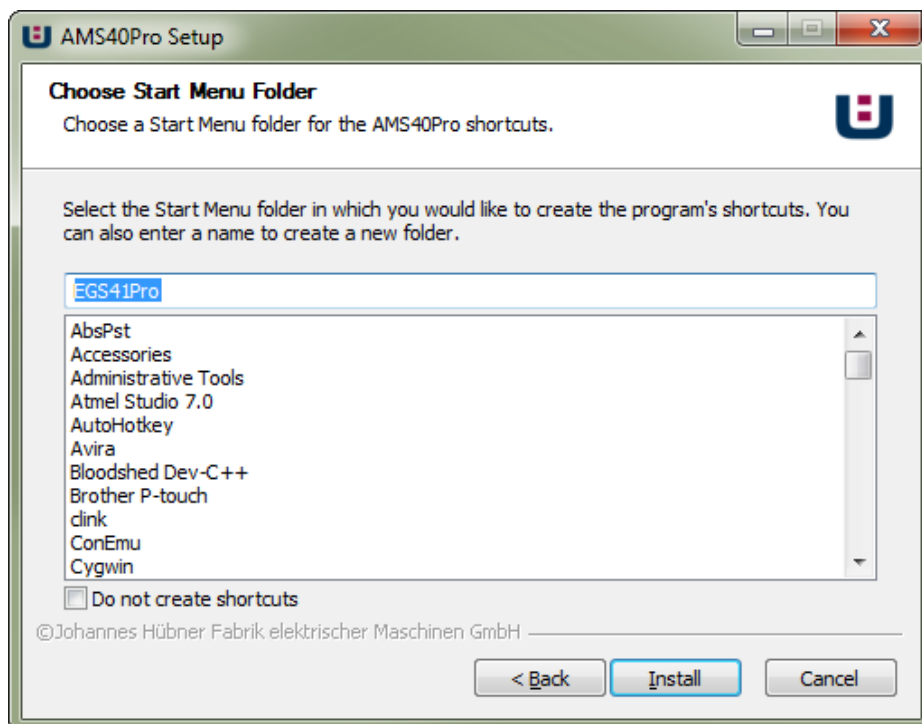
Select the language and press "Ok".



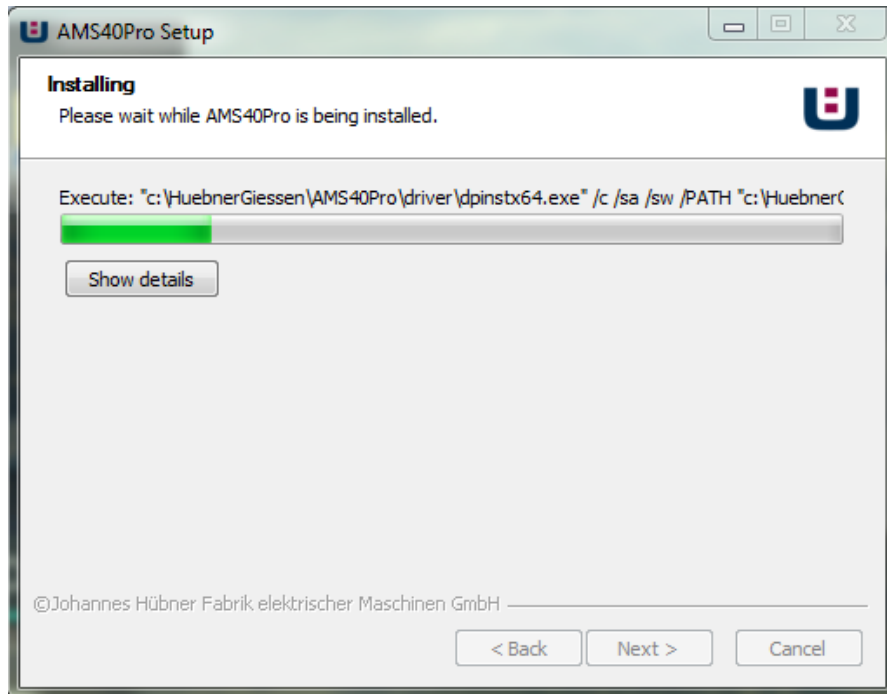
Agree to the License agreement



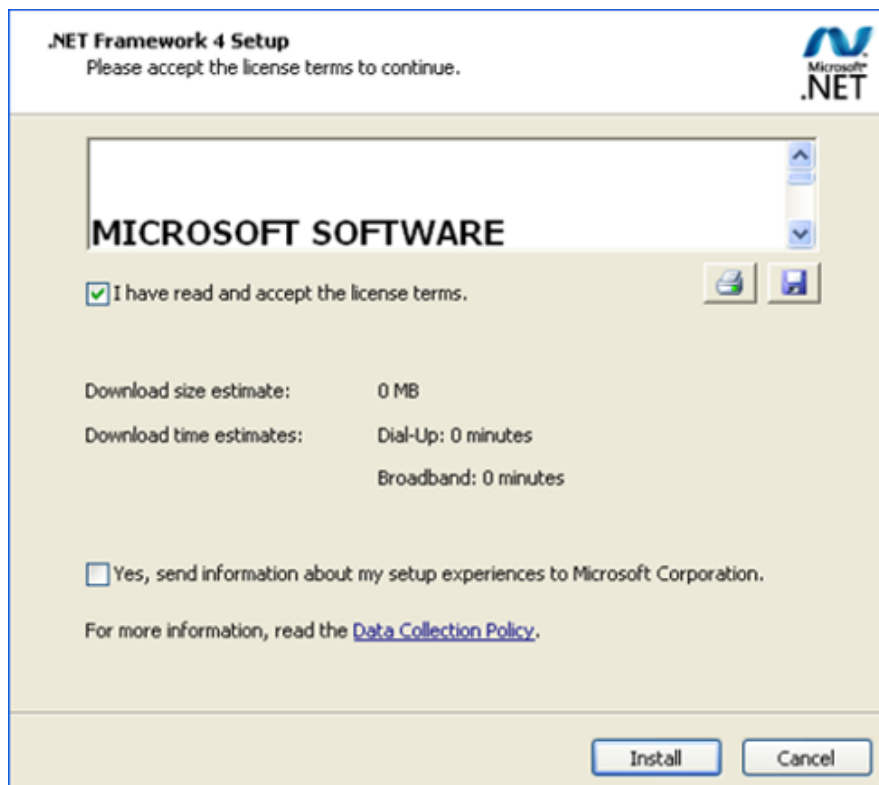
Choose your installation path and press "Next".



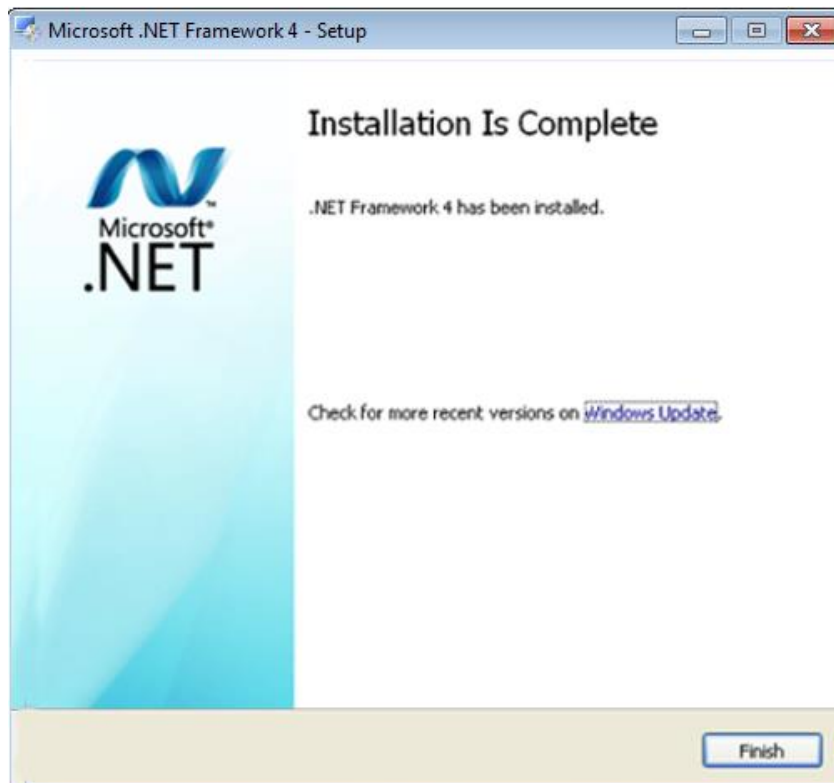
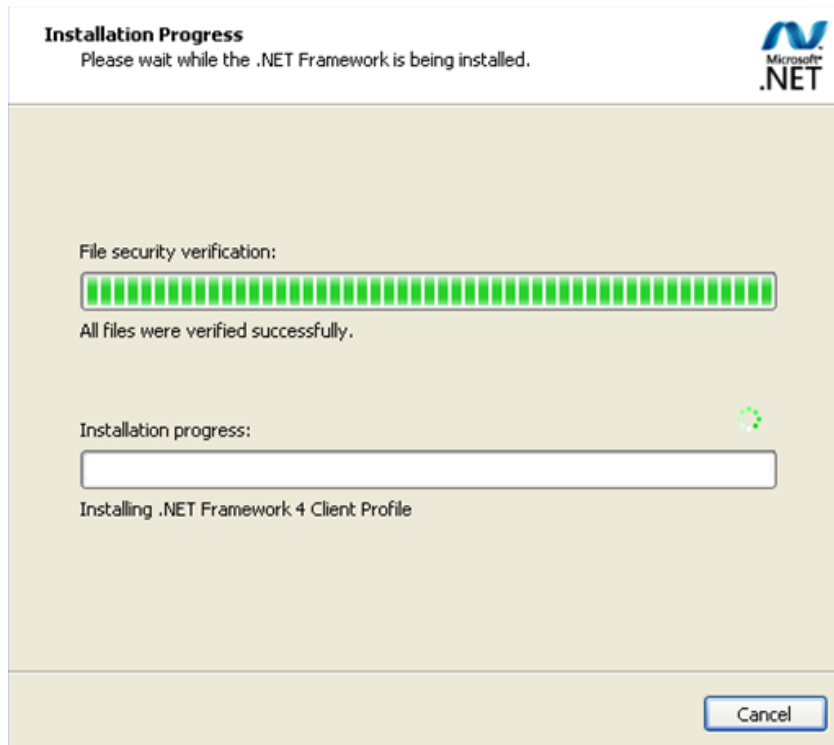
Select your Menu entry and press „Install“ to start the installation of the software.



Wait for the installation process to finish

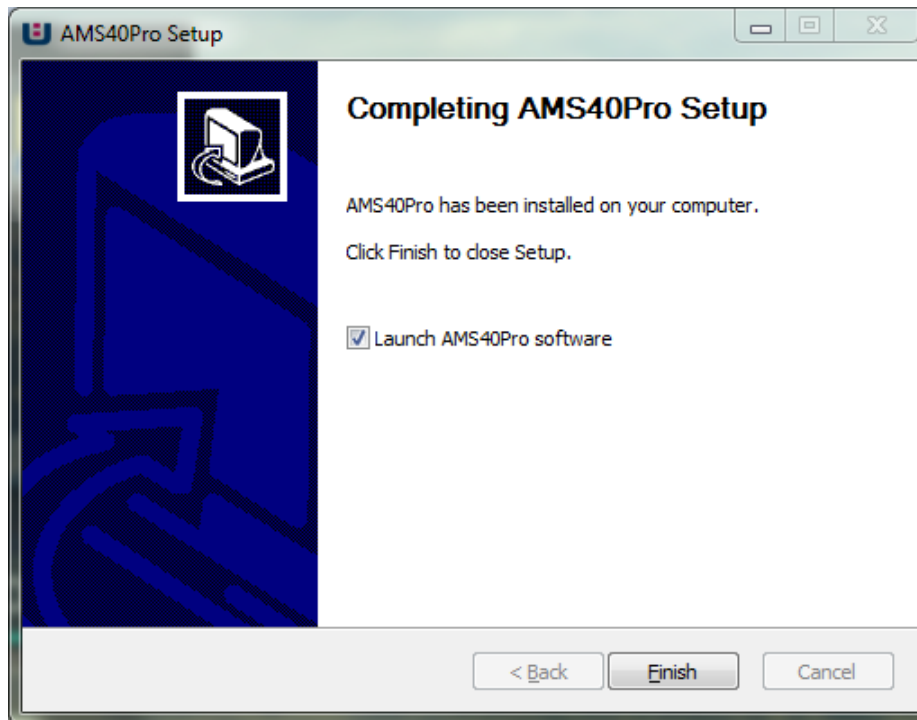


If the “.Net Framework” is not installed at your PC follow the onscreen instructions of the setup and press “Install”



Press „Finish“ to complete the “.NET Framework” setup.

Now back in the main setup press “Finish” to complete the AMS40Pro setup.



After that the application will start up.

2. General

With the AMS40Pro – software you can change the following settings:

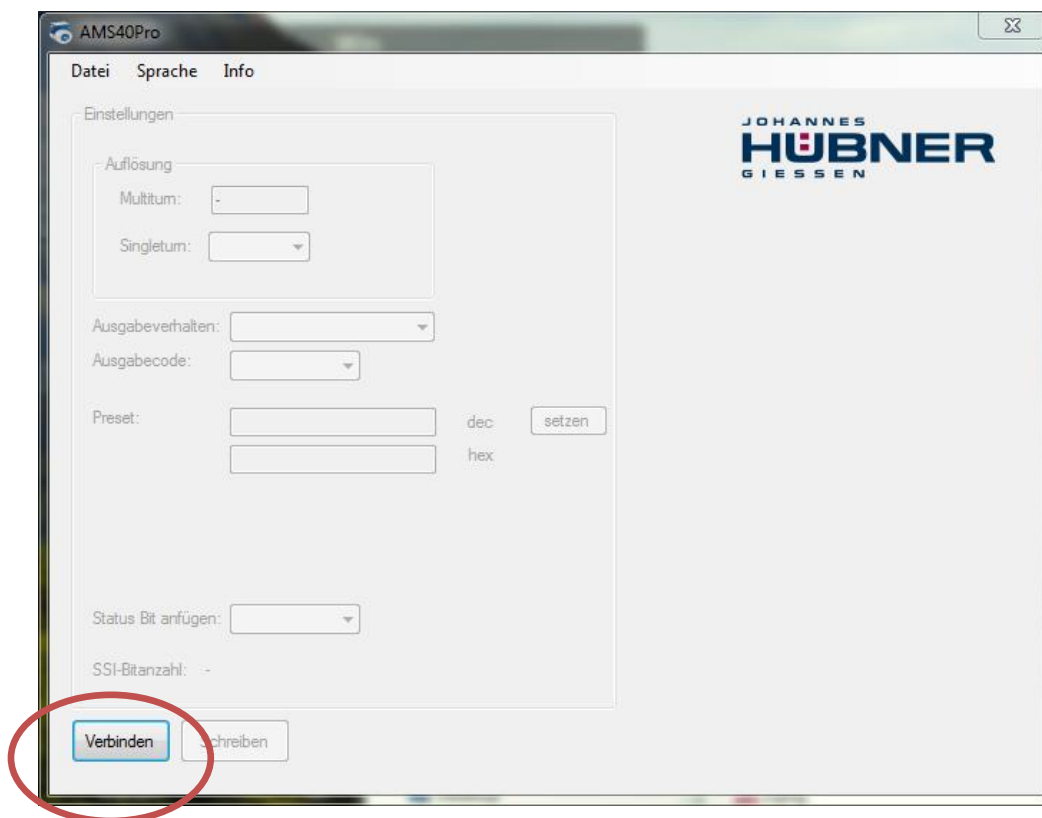
- Resolution Singleturn
- Output code
- Preset Value
- Add status bit to SSI protocol

It is also possible to execute a preset and to show the current position data.

Operation

- Connect the Encoder to the Interface cable (Pin 1 to 6) according to the connection diagram.
- Connect the interface cable to the interface box.
- Connect the interface box via USB to the PC.
- Start the AMS40Pro software

Connection diagram PN195-400		
SSI	Colour	Function
1	white	GND
2	brown	UB
3	pink	Clk out +
4	grey	Clk out -
5	green	Data in +
6	yellow	Data in -



Press the „Connect“ button to start the communication with the encoder.

Settings

Resolution

Multitum: 12 Bit

Singletum: 13 Bit

Output code: Binary

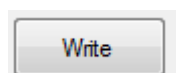
Preset: 0 dec 0 hex set

Append status bit: Yes

SSI-Bitcount: 14 Bit

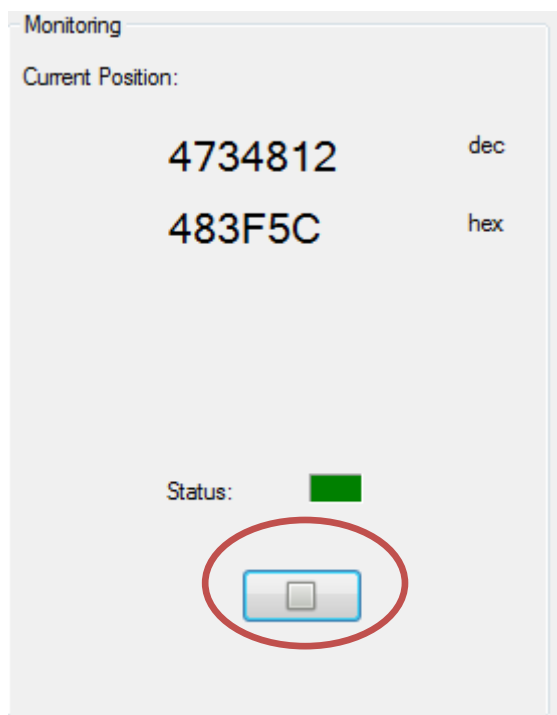
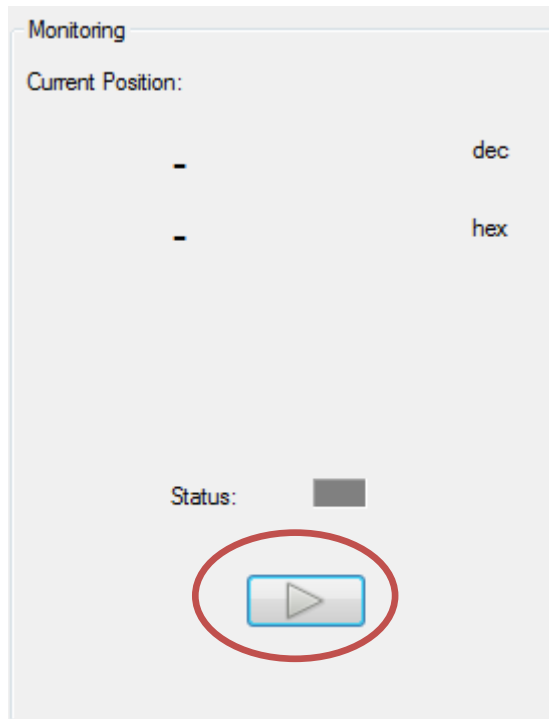
In the Settings group the desired settings can be selected.

To save the changes click on:



To execute a preset press the „set“ button.

To Start Monitoring click on The Play-symbol.



The monitoring shows the current position.
To stop the monitoring click on the Stop - symbol.